



Introducing Corcom HZ Power Line Filters

TE Connectivity has launched the new Corcom HZ power line filters series. Current ratings range from 3A-30A with low leakage current to comply with medical industry standards. The low leakage characteristic of the Corcom HZ Series filters reduces the risk of accidental electric shock in the case of ground circuit faults in the medical device. The Corcom HZ Series offers solid attenuation from 10kHz to 30MHz. The product's performance related to its small footprint (40% smaller than similar power line filters) is unique in the market.

KEY FEATURES

- Low leakage current
- Small size
- Strong differential mode performance

APPLICATIONS

Medical applications

- Ultrasound
- Patient monitoring
- Surgical
- Therapeutic
- Interventional

Industrial environment

- The HZ Series power line filters could also be used in industrial applications with ground fault interrupters.

MORE INFORMATION

For a full overview of TE Connectivity's Corcom filter products, please download or order the Corcom Product Guide, literature number 1654001, at te.com.

SPECIFICATIONS

Maximum leakage current each Line to Ground

- 2µA @ 120 VAC 60Hz
- 5µA @ 250 VAC 50Hz

Hipot rating (one minute)

- Line to Ground: 2250 VDC
- Line to Line: 1450 VDC

Rated Voltage (max)

- 250 VAC

Operating Frequency

- 50/60Hz

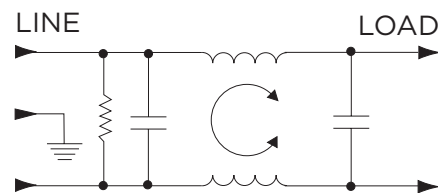
Rated Current

- 3A, 4A, 6A, 10A, 15A, 20A, 30A

Operating Ambient Temperature Range (at rated current I_r)

- -10°C to +40°C
- In an ambient temperature (T_a) higher than +40°C the maximum operating current (I_o) is calculated as follows: $I_o = I_r \cdot \sqrt{(85 - T_a) / 45}$

ELECTRICAL SCHEMATIC



STANDARDS

- UL recognized
- CSA certified
- VDE approved



NEW PRODUCT

Samples Available Now



AVAILABLE PART NUMBERS

- 3EHZ1 6609055-1
- 4EHZ1 2-1609037-8
- 6EHZ1 2-1609037-9
- 10EHZ1 3-1609037-0
- 15EHZ1 3-1609037-1
- 20EHZ1 3-1609037-2
- 30EHZ6 3-1609037-3

FILTER PORTFOLIO FOR MEDICAL INDUSTRY

TE Connectivity offers a range of Corcom filters for the medical industry.

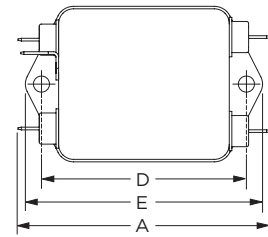
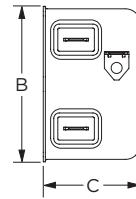
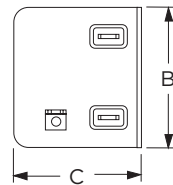
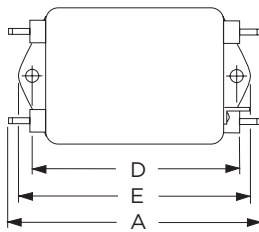
RFI Power Line Filters

- HQ, HT, HZ and MV series

Power Inlet Filters & Power Entry Modules

- C, H, HG, EJM, EJM, L, M and P series

CASE STYLES

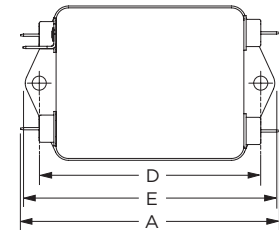
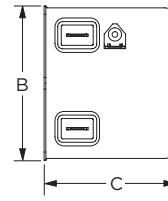
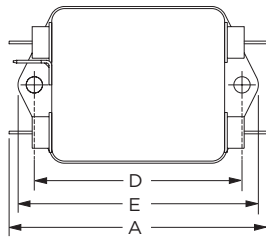
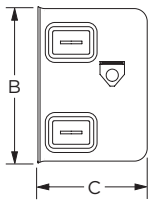


Typical Dimensions 3EHZ1

Line/Load Terminals (4):	6.3mm (.250") with 1.8mm (.07") Dia. hole
Ground Terminal (1):	6.3mm (.250") with 1.8mm x 3.8mm (.07" x .16") slot
Mounting Holes (2):	4.78mm (.188") Dia.

Typical Dimensions 4EHZ1

Line/Load Terminals (4):	6.3mm (.250") with 1.8mm (.07") Dia. hole
Ground Terminal (1):	6.3mm (.250") with 1.8mm x 3.8mm (.07" x .16") slot
Mounting Holes (2):	4.78mm (.188") Dia.

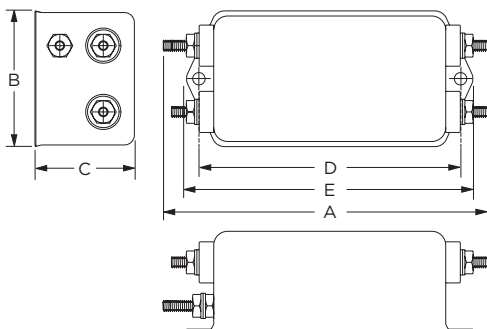


Typical Dimensions 6EHZ1

Line/Load Terminals (4):	6.3mm (.250") with 1.8mm (.07") Dia. hole
Ground Terminal (1):	6.3mm (.250") with 1.8mm x 3.8mm (.07" x .16") slot
Mounting Holes (2):	4.78mm (.188") Dia.

Typical Dimensions 10EHZ1, 15EHZ1, 20EHZ1

Line/Load Terminals (4):	6.3mm (.250") with 1.8mm (.07") Dia. hole
Ground Terminal (1):	6.3mm (.250") with 1.8mm x 3.8mm (.07" x .16") slot
Mounting Holes (2):	4.78mm (.188") Dia.



Typical Dimensions 30EHZ6

Terminals (5):	8-32, Torque 2.03 N-m (18 lbf-in.) max. ± 2 (.22")
Mounting Holes (4):	4.75mm (.188") Dia.

Part Number	A max. mm (inches)	B max. mm (inches)	C max. mm (inches)	D ±0.38 mm (±.015 inches)	E max. mm (inches)
3EHZ1	89.91 (3.54)	52.8 (2.08)	33.3 (1.31)	74.63 (2.938)	85.1 (3.35)
4EHZ1	77.98 (3.07)	46.23 (1.82)	29.46 (1.16)	60.33 (2.375)	70.61 (2.78)
6EHZ1	77.98 (3.07)	46.23 (1.82)	32.51 (1.28)	60.33 (2.375)	70.61 (2.78)
10EHZ1 15EHZ1 20EHZ1	89.92 (3.54)	51.99 (2.047)	45.85 (1.805)	74.63 (2.938)	89.92 (3.54)
30EHZ6	124.97 (4.92)	52.58 (2.07)	38.86 (1.53)	100.25 (3.947)	109.98 (4.33)

